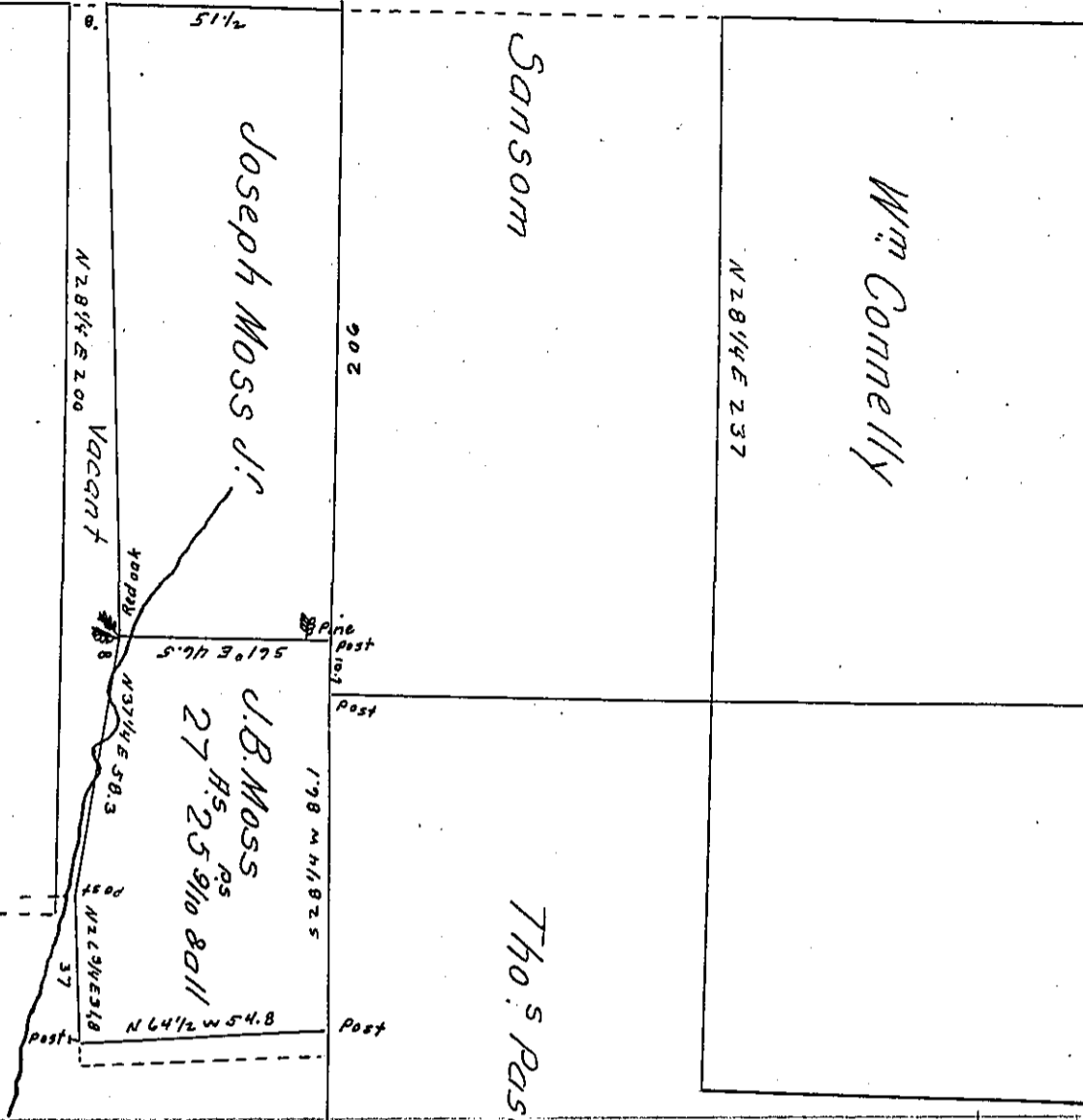


John Murray



Draft of a tract of Land Situate in Ross Township Luzerne County. Surveyed to J.B. Moss and Containing Twenty Seven acres and Twenty five Ninth Perches. Surveyed Friday 31st December 1869 in pursuance of his Warrant dated 24th day of February 1868- Land is improved.

Was boxed to date of Tho^s Pascal

Patrick Blewitt
County Surveyor.

IN TESTIMONY that the above is a copy of the original remaining on file in the Department of Internal Affairs of Pennsylvania, made conformably to an Act of Assembly approved the 16th day of February, 1833, I have hereunto set my Hand and caused the Seal of said Department to be affixed at Harrisburg, this twenty third day of February 1906.

Isaac B. Brown
Secretary of Internal Affairs.